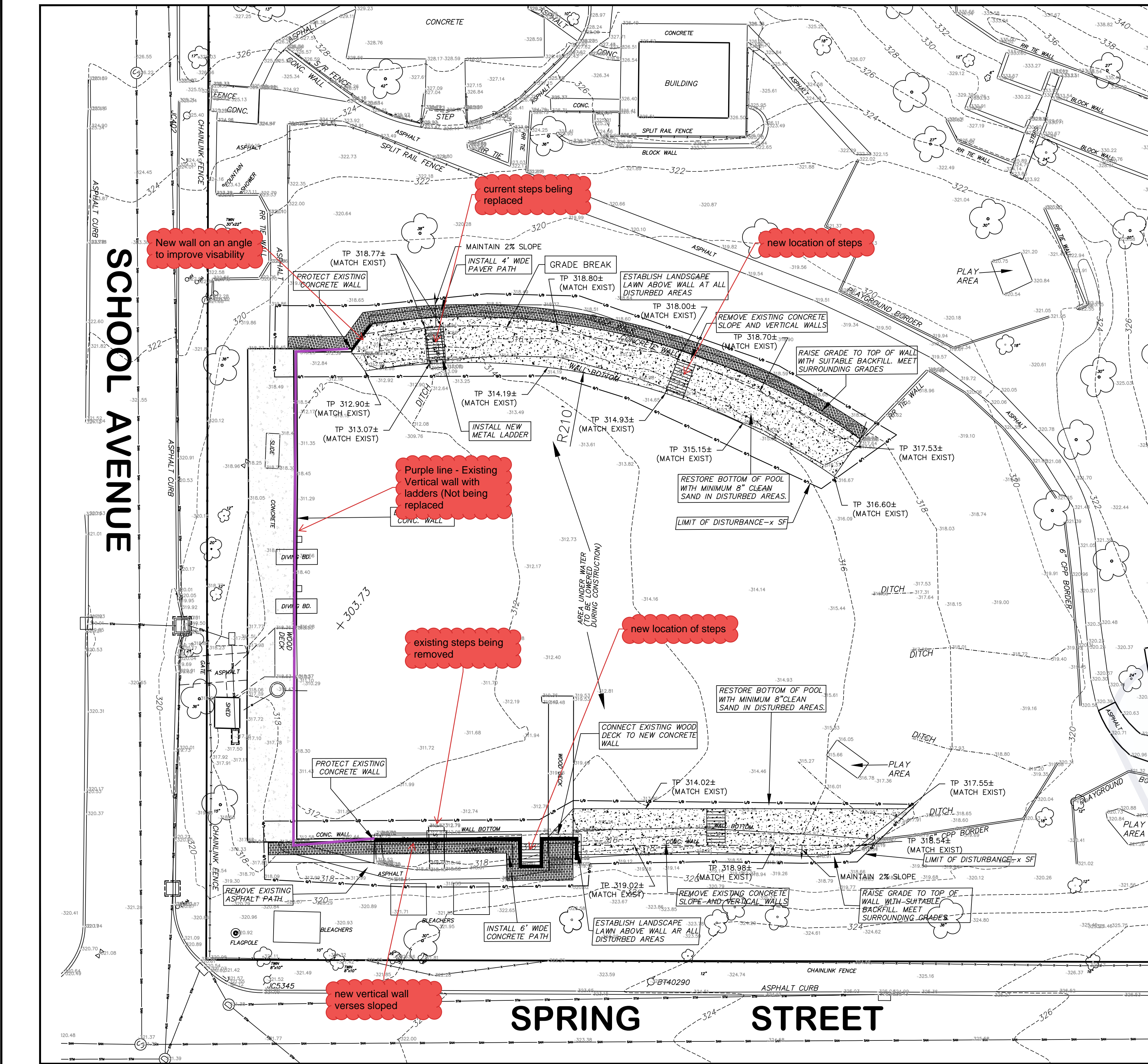
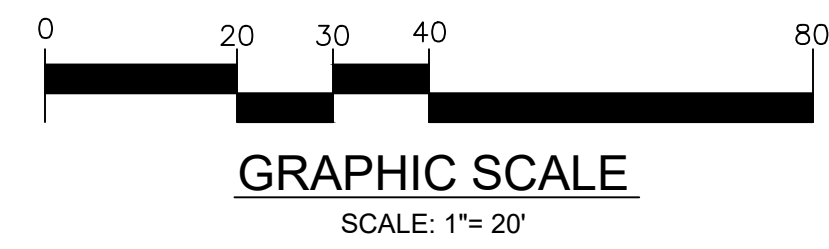


Cadd:c:\users\sn99463\documents\nasa_projects\chatham_colony_pool\colony_pool_retaining_wall.dwg 7/26/2024 12:57:14 PM



SITE PLAN



THIS TOPOGRAPHIC SURVEY IS REFERENCED TO NEW JERSEY STATE PLANE COORDINATE SYSTEM NAD'83 AND ELEVATION NAVD'88.

NOTES:

1. CONTRACTOR TO FIELD VERIFY ALL PROPOSED ELEVATIONS.
2. EXISTING 2"(±) WATER SUPPLY PIPES FROM WELL HOUSE TO POND ARE TO BE PROTECTED.
3. CONTRACTOR TO COMPLETE TEST PITS AS DIRECTED IN ADVANCE OF ORDERING OR INSTALLING ANY CONSTRUCTION MATERIALS.
4. CONTRACTOR SHALL UTILIZE A SUITABLE PAVEMENT SAW OR MILLING MACHINE TO CUT ALL PAVEMENTS AND CONCRETE IN NEAT LINES.
5. REFER TO DETAIL SHEET FOR SOIL EROSION AND SEDIMENT CONTROL DETAILS AND NOTES.
6. UTILITY LOCATIONS SHOWN ARE APPROXIMATE. UTILITY SERVICE CONNECTIONS ARE NOT SHOWN. CONTRACTOR SHALL CALL FOR MARKOUT OF THESE FACILITIES PRIOR TO CONSTRUCTION.
7. ALL EXISTING CONCRETE SHALL BE DISPOSED OF OFF-SITE AND NOT USED ON AS ON-SITE BACKFILL.
8. CONTRACTOR SHALL DEFINE THE LOCATION OF SITES TO BE USED FOR DISPOSAL OF EXCAVATION MATERIALS PRIOR TO PRECONSTRUCTION MEETING AND IN ACCORDANCE WITH SOIL EROSION AND SEDIMENT CONTROL STANDARDS.
9. CONTRACTOR SHALL COMPLY WITH ALL ENVIRONMENTAL PROTECTION AND RESTORATION REQUIREMENTS SHOWN ON CONTRACT DRAWINGS AND INCLUDED IN CONTRACT SPECIFICATIONS.
10. SEEDING AND GRADING LIMIT SHALL INCLUDE ALL AREAS WHICH ARE PART OF THE NEW CONSTRUCTION AND ALL AREAS DISTURBED BY CONSTRUCTION PROCEDURES, EQUIPMENT OR VEHICLES. ALL DECORATIVE SHRUBS DISTURBED SHALL BE REPLACED IN KIND OR AS DIRECTED BY THE ENGINEER.
11. CONTRACTOR TO FINE GRADE WITHIN 10 FEET OF ALL IMPROVEMENTS. GRADING AROUND DRAINAGE INLETS SHALL ENSURE THAT AREAS OF CONCENTRATED RUNOFF ARE DIRECTED TO GRATES.
12. DEWATERING WILL BE REQUIRED. SILT LADEN WATER SHALL NOT BE DISCHARGED TO DRAINAGE PIPING OR WATERWAYS.



CHATHAM TOWNSHIP MORRIS COUNTY, NEW JERSEY COLONY POOL RETAINING WALL BLOCK 106 - LOT 1 SITE PLAN		M M MOTT MACDONALD Certificate No. 24GA28016800 412 Mt. Kemble Avenue Suite G22 Morristown, New Jersey 07960 Tel. 908.256.6600 Fax. 973.267.2890		JOHN K. RUSCHKE PROFESSIONAL ENGINEER NEW JERSEY LICENSE NO. 37148		Approved JKR	Checked HB	Drawn NM	Designed AS	Date 6/26/24	Date 6/26/24	FOR APPROVAL	Revision
File	COLONIAL POOL IMPR.	Book	Page	Job	No.	Scale	B/O	Total					
507109812-006			2			1"=20'		7					